



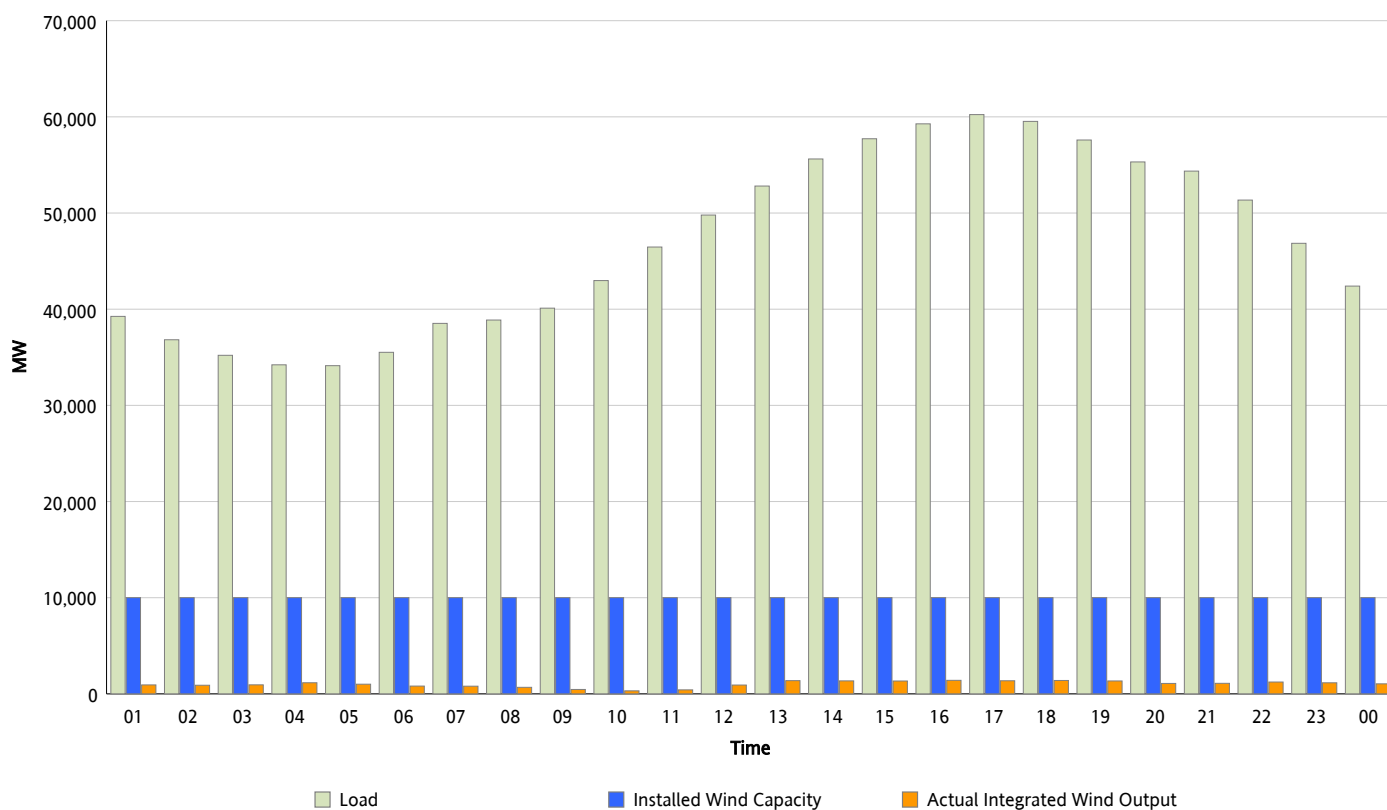
## ERCOT Grid Operations

### Wind Integration Report : 08/29/2012

|                      |           |
|----------------------|-----------|
| Peak Load            | 60,235 MW |
| Load Peak Hour (HE)  | 17        |
| Wind Over Peak       | 1,363 MW  |
| Wind Record 06/19/12 | 8,368 MW  |
| Max Wind Value*      | 1,518 MW  |
| Wind Peak Time       | 18:07     |
| Wind Integration %   | 2.6 %     |

#### Hourly Average Actual Load vs. Actual Wind Output

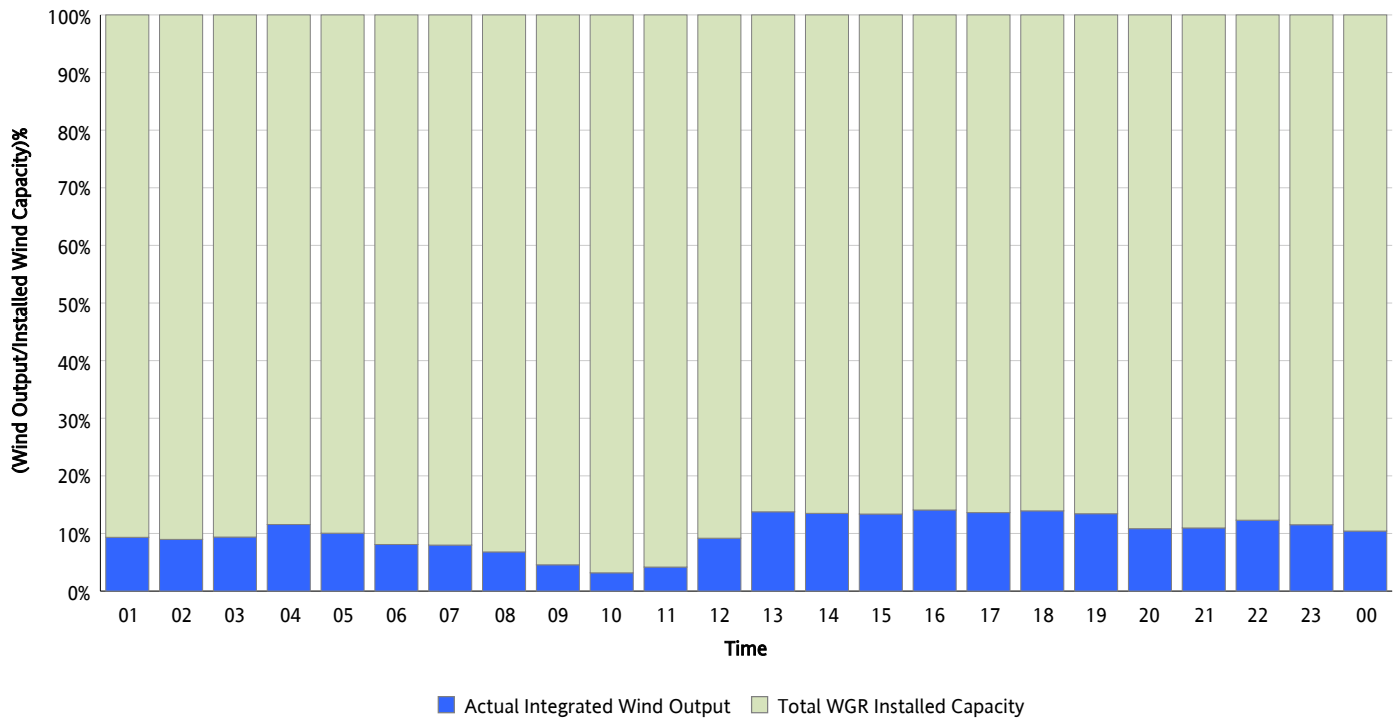
08/29/2012



\* Wind Record and Wind Max represent instantaneous values and the rest of the values are integrated over the hour

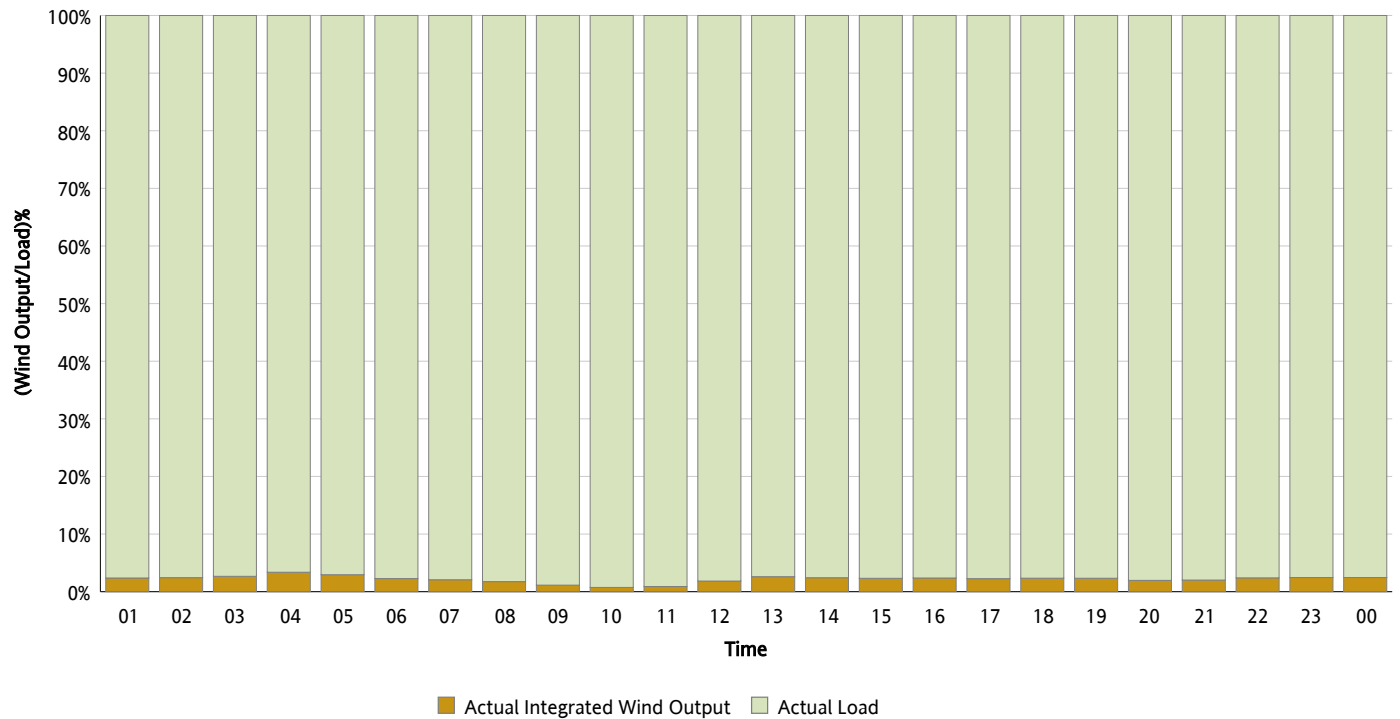
## Actual Wind Output as a Percentage of the Total Installed Wind Capacity

08/29/2012



## Actual Wind Output as a Percentage of the ERCOT Load

08/29/2012



## ERCOT Load vs. Actual Wind Output

08/22/2012 - 08/29/2012

